



COMPEL  
23,4

1006

# Comparison of sliding-surface and moving-band techniques in frequency-domain finite-element models of rotating machines

Herbert De Gerssem

*Institut für Theorie Elektromagnetischer Felder (TEMF),  
Technische Universität Darmstadt, Darmstadt, Germany*

Johan Gyselinck and Patrick Dular

*Department of Electrical Engineering and Computer Science (ELAP),  
University of Liège, Liège, Belgium*

Kay Hameyer

*RWTH Aachen, Institut für Elektrische Maschinen, Aachen, Germany*

Thomas Weiland

*Institut für Theorie Elektromagnetischer Felder (TEMF),  
Technische Universität Darmstadt, Darmstadt, Germany*

**Keywords** *Finite element analysis, Electric machines, Electrotechnology*

**Abstract** *The sliding-surface and moving-band techniques are introduced in frequency-domain finite element formulations to model the solid-body motion of the rotors in an cylindrical machine. Both techniques are compared concerning their feasibility and computational efficiency. A frequency-domain model of a capacitor motor is equipped with a sliding surface and compared to a transient model with moving band. This example illustrates the advantages of frequency-domain simulation over transient simulation for the simulation of steady-state working conditions of electrical machines.*

## 1. Introduction

One of the most important design criteria for electrotechnical devices is given by their characteristics for steady-state operation. Properties such as, efficiency, produced torque, magnitude of the effective current, harmonic contents of currents and voltages, temperature rise at nominal operation are examined prior to fine tuning the design towards characteristics of secondary importance. The nominal operation mode of almost all electrical energy transducers is an operation at steady-state, i.e. periodically changing currents, voltages, speed and torque. For the numerical simulation of such conditions, frequency-domain formulations may be advantageous over transient formulations, especially when only a small number of *a priori* known significant time-harmonic components are expected. Standard static and time-harmonic approaches are commonly



applied to particular transformer and motor models. Neglecting the influence of higher harmonics, introduced by e.g. ferromagnetic saturation, non-linear loads, power electronic equipment and moving parts, is however, only acceptable in specific cases. The increasing machine performance and the application of inverters necessitates to account for higher harmonic effects in the simulations. A multi-harmonic approach meets this requirement by considering a set of harmonic components at predefined frequencies (Yamada *et al.*, 1989). The higher harmonics introduced by saturation and switching devices can be considered as illustrated by transformer examples. The application of the frequency-domain approach to models with moving parts, e.g. electrical machines, is not straightforward (Vandeveldel *et al.*, 1994; Vinsard and Laporte, 1994). The Lagrangian approach which is commonly applied for transient, motional eddy current simulation, ties different coordinate systems to each of the solid, moving or non-moving bodies. The continuity of the magnetic field is enforced by e.g. a moving-band approach (Davat *et al.*, 1985) or a sliding-surface technique (Rodger *et al.*, 1990). Although these techniques are well-established in transient simulation schemes, their application in frequency-domain formulations still causes numerical inconveniences. In this paper, the moving-band and sliding-surface techniques are introduced in frequency-domain finite element (FE) models and compared for their efficiency.

## 2. Multi-harmonic simulation

A comparison is set-up for a 2D frequency-domain FE model of a rotating machine, using the magnetodynamic formulation:

$$-\frac{\partial}{\partial x} \left( \nu \frac{\partial A_z}{\partial x} \right) - \frac{\partial}{\partial y} \left( \nu \frac{\partial A_z}{\partial y} \right) + \sigma \frac{\partial A_z}{\partial t} = J_s \quad (1)$$

in terms of the  $z$ -component  $A_z$  of the magnetic vector potential with  $\nu$  the reluctivity,  $\sigma$  the conductivity and  $J_s$  the source current density. The coordinate system at the stator is denoted by  $(x, y)$  or in polar coordinates  $(r, \theta)$ . The coordinate systems at the rotor, i.e.  $(x', y')$  and  $(r, \theta')$ , are related to those at the stator by  $\theta' = \theta - \omega_m t$  with  $\omega_m$  the constant angular mechanical velocity.

The frequency-domain FE technique applies a twofold weighted residual approach together with a twofold discretisation, i.e. a spatial discretisation of a domain  $\Omega$  by a linear independent set of  $n_{fe}$  FE shape functions  $\alpha_j(x, y)$  and a time discretisation at a temporal domain  $Y$  over the time period  $T$  by an orthonormal set of  $n_{hm}$  harmonic functions  $H_q(t)$  (Gyselinck *et al.*, 2002). The harmonic functions are chosen from the set  $\{1, \sqrt{2} \cos(\omega_q t), -\sqrt{2} \sin(\omega_q t)\}$ , where 1 represents the DC components and  $\omega_q$  belongs to a set of *a priori* chosen electrical pulsations which are multiples of the fundamental pulsation  $\omega_{fund} = 2\pi/T$ . The combined shape functions  $\alpha_j(x, y)H_q(t)$  are basis functions for the product space combining both approximation spaces. The discretisation of the magnetic vector potential reads:

$$A_z(x, y, t) = \sum_{j=1}^{n_{fe}} \sum_{q=1}^{n_{hm}} u_{j,q} \alpha_j(x, y) H_q(t). \quad (2)$$

The application of the Ritz-Galerkin technique, i.e. the weighing of the partial differential equation (1) with  $A_z$  discretised by equation (2) results in the system of equations:

$$\mathbf{K}\mathbf{u} = \mathbf{f} \quad (3)$$

where

$$\mathbf{K}_{i,p,j,q} = \int_{\Omega} \int_Y \left( \nu H_p H_q \nabla \alpha_i \cdot \nabla \alpha_j + \sigma H_p \frac{dH_q}{dt} \alpha_i \alpha_j \right) dt dx dy; \quad (4)$$

$$\mathbf{f}_{i,p} = \int_{\Omega} \int_Y J_s \alpha_i H_q dt dx dy.$$

The particular choice of harmonic functions  $H_q$  as the temporal shape functions characterises the frequency-domain approach. Because of the fact that temporal shape functions are orthonormal in  $Y$ , the system matrix  $\mathbf{K}$  has a block diagonal structure when the equations are ordered according to the spatial shape functions first.

### 3. Machine model

The stator and rotor domains  $\Omega_{st}$  and  $\Omega_{rt}$  are treated independently. Different sets of temporal harmonics are allowed for both domains. The frequency-domain FE discretisation reads:

$$\mathbf{K}_{st} \mathbf{u}_{st} = \mathbf{f}_{st}; \quad (5)$$

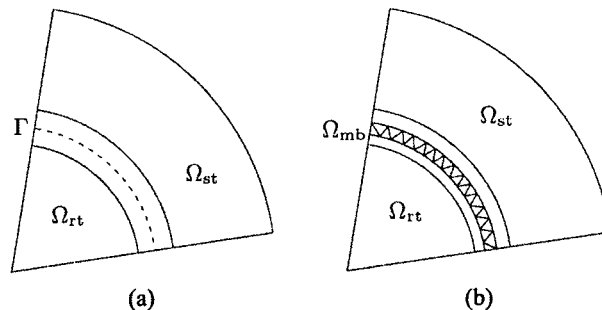
$$\mathbf{K}_{rt} \mathbf{u}_{rt} = \mathbf{f}_{rt}. \quad (6)$$

When a sliding-surface technique is applied, the stator domain  $\Omega_{st}$  and the rotor domain  $\Omega_{rt}$  share the common circular interface  $\Gamma = \Omega_{st} \cap \Omega_{rt}$  in the air gap of the rotating device (Figure 1). When constructing equations (5) and (6), independent degrees of freedom are considered at the stator and rotor sides of  $\Gamma$ . In case of the moving-band approach, a single layer of finite elements is constructed in a small circular domain  $\Omega_{mb}$ , situated in the air gap of the machine between  $\Omega_{st}$  and  $\Omega_{rt}$  (Davat *et al.*, 1985). The connection between the inner boundary of the stator and the outer boundary of the rotor is discussed in the following sections.

The distribution of the magnetic vector potential at a circle in the air gap can be decomposed in a sum of rotating waves:

$$u(\theta, t) = \sum_p \sum_k u_{p,k} \cos(\omega_p t - \lambda_k \theta - \phi_{p,k}) \quad (7)$$

where  $\omega_p$ ,  $\lambda_k$  and  $\phi_{p,k}$  denote the pulsation, the pole-pair number and the phase of the wave and  $u_{p,k}$  are unknown coefficients. An observer attached to the rotor experiences the air-gap field:



**Figure 1.**  
(a) Sliding-surface, and  
(b) moving-band  
techniques, for an  
electrical machine model

$$u'(\theta', t) = \sum_p \sum_k u_{p,k} \cos(\tilde{\omega}_{p,k}t - \lambda_k \theta' - \phi_{p,k}), \quad (8)$$

i.e. a linear combination of waves with the same pole-pair numbers and phases, but at the slip pulsations  $\tilde{\omega}_{p,k} = \omega_p - \lambda_k \omega_m$ . Hence, the selection of the set of harmonics to be considered at the rotor, not only depends on the harmonics present in the stator but also on the spatial-harmonic contents expected for the air-gap field, e.g. the higher harmonics introduced by the winding scheme and those due to the slotting of stator and rotor.

#### 4. Sliding-surface technique

Several sliding-surface techniques can be distinguished based on the choice of method for enforcing the continuity at the common interface. In general, the stator and rotor meshes at  $\Gamma$  do not match for all positions attained during the time integration. Hence, the field at one of the both sides has to be interpolated (Perrin-Bit and Coulomb, 1995) or mortar-projected (Rodger *et al.*, 1990) on the mesh of the other side. A third non-matching mesh treatment which is particularly efficient for rotating devices, is a mortar-element method with harmonic test functions as proposed in De Gerssem and Weiland (2003). This approach is particularly suited in case of a frequency-domain FE formulation and is favoured here.

The continuity of the magnetic vector potential at the sliding surface is enforced by weighing the difference between the magnetic vector potential at  $\Gamma$  with the spatial harmonic test functions  $\xi_{k,p}(\theta, t) = G_k(\theta)H_p(t)$  where

$$G_k(\theta) \in \{1, \sqrt{2} \cos(\lambda_k \theta), -\sqrt{2} \sin(\lambda_k \theta)\} \quad (9)$$

and  $\lambda_k \in \mathbb{N}$ . The resulting constraint equation is:

$$\mathbf{B}_{st} \mathbf{u}_{st} - \mathbf{B}_{rt} \mathbf{u}_{rt} = 0 \quad (10)$$

where

$$\mathbf{B}_{st,k,p,j,q} = \int_{\Gamma} \int_Y \alpha_j(\theta) H_q(t) G_k(\theta) H_p(t) d\theta dt;$$

$$\mathbf{B}_{rt,k,p,j,q} = \int_{\Gamma} \int_Y \alpha_j(\theta') H_q(t) G_k(\theta' + \omega_m t) H_p(t) d\theta' dt.$$

The constraints are added to the formulation using a set of Lagrange multipliers  $\mathbf{z}$ , resulting in the saddle-point model:

$$\begin{bmatrix} \mathbf{K}_{st} & 0 & \mathbf{B}_{st}^H \\ 0 & \mathbf{K}_{rt} & -\mathbf{B}_{rt}^H \\ \mathbf{B}_{st} & -\mathbf{B}_{rt} & 0 \end{bmatrix} \begin{bmatrix} \mathbf{u}_{st} \\ \mathbf{u}_{rt} \\ \mathbf{z} \end{bmatrix} = \begin{bmatrix} \mathbf{f}_{st} \\ \mathbf{f}_{rt} \\ 0 \end{bmatrix}. \quad (11)$$

If a sliding surface is applied at a circular interface with an equidistant grid, the computational cost of the operators  $\mathbf{B}_{st}$  and  $\mathbf{B}_{rt}$  can be reduced considerably by

weighing the magnetic vector potential at a discrete set of points, e.g. at the FE vertices at  $\Gamma$  (De Gersem and Hameyer, 2002). Then, the discretisation is no longer conforming, but the integrations in equation (11) can be rearranged such that the fast Fourier transform (FFT) can be applied  $\mathbf{F}$  instead of the dense matrices  $\mathbf{B}_{st}$  and  $\mathbf{B}_{rt}$ , for each temporal harmonic separately:

$$\mathbf{B}_{st,p,q} = \delta_{pq} \mathbf{F} \quad (12)$$

$$\mathbf{B}_{rt,p,q} = \mathbf{R}_{pq} \mathbf{F} \quad (13)$$

where  $\mathbf{R}_{k,p,q} = 1$  if  $\omega_p = \omega_q - \lambda_k \omega_m$ , i.e. if the pulsation  $\omega_p$  at the rotor side matches the slip pulsation introduced by the air-gap wave with pulsation  $\omega_q$  and pole pair number  $\lambda_k$ . The approach with the FFT does not account for the curvature of  $\Gamma$  and the exact distribution of the magnetic vector potential between the FE vertices at  $\Gamma$ . This approximation is, however, acceptable for many machine models as long as a sufficient fine discretisation is constructed at  $\Gamma$ .

### 5. Moving-band technique

A moving-band  $\Omega_{mb}$  is a small circular domain, situated in the air gap of the machine in which a single layer of FEs is constructed (Davat *et al.*, 1985 and Demenko, 1996) (Figure 1). The moving band is remeshed for every angular position. Hence, the supports of the spatial FE shape functions in the moving band change depending on the position. The contributions of the elements of  $\Omega_{mb}$  read, e.g. for  $i \in \Omega_{st}$  and  $j \in \Omega_{rt}$ ,

$$\mathbf{K}_{mb,st,rt,i,p,j,q} = \int_{\Omega_{mb}} \int_Y \nu H_p(t) H_q(t) \nabla \alpha_i(x,y) \cdot \nabla \alpha_j(x',y') dt dx dy. \quad (14)$$

Since the relation between the coordinate systems  $(x,y)$  and  $(x',y')$  and the overlap of the supports of two spatial FE shape functions  $\alpha_i(x,y)$  and  $\alpha_j(x',y')$  depend on the velocity and time, the contributions of elements of  $\Omega_{mb}$  to the stiffness matrix result in a full coupling between all harmonics (Gyselincx *et al.*, 2003). The combined system of equations is:

$$\begin{bmatrix} \mathbf{K}_{st} + \mathbf{K}_{mb,st,st} & \mathbf{K}_{mb,st,rt} \\ \mathbf{K}_{mb,rt,st} & \mathbf{K}_{rt} + \mathbf{K}_{mb,rt,rt} \end{bmatrix} \begin{bmatrix} \mathbf{u}_{st} \\ \mathbf{u}_{rt} \end{bmatrix} = \begin{bmatrix} \mathbf{f}_{st} \\ \mathbf{f}_{rt} \end{bmatrix}. \quad (15)$$

## 6. Comparison between moving-band and sliding-surface approaches

### 6.1 Computational complexity

In case of a multi-harmonic formulation, the stator-rotor coupling gives rise to additional dense matrix parts or to dense constraint equations, both when using the moving-band technique or the sliding-surface approach. This is the main drawback for multi-harmonic formulations compared to transient formulations. The number of FE vertices at  $\Gamma$  scales as  $\sqrt{n_{fe}}$ . The computational complexities of the individual components of the system matrix components are gathered in Table I. The dense matrix parts  $\mathbf{K}_{mb}$ ,  $\mathbf{B}_{st}$  and  $\mathbf{B}_{rt}$  have the same complexity as the multi-harmonic FE system matrices  $\mathbf{K}_{st}$  and  $\mathbf{K}_{rt}$  themselves and, hence, may lead to a substantial increase of the computational cost of the algorithm. When the FFT-variant of the sliding-surface

technique is applied, the asymptotical complexity of  $\mathbf{B}_{st}$  and  $\mathbf{B}_{rt}$  remains below the one of  $\mathbf{K}_{st}$  and  $\mathbf{K}_{rt}$ . Hence, the stator-rotor coupling does not kill the numerical efficiency of multi-harmonic simulation.

### 6.2 Applicability

The moving-band technique also applies to models with more sophisticated motion patterns. The sliding-surface technique with harmonic test functions is restricted to circular interfaces or to integer parts of them. An efficient implementation of the sliding-surface technique moreover requires an equidistant mesh at the interface in the air gap. The construction of generally applicable preconditioners for the systems augmented with sliding-surface constraints is cumbersome (De Gersem *et al.*, 2003).

### 6.3 Discretisation error

The moving-band technique yields conforming, variational formulations, i.e. the FE meshes match in the air gap and a constrained FE test and trial space is used for the magnetic vector potential. For the sliding-surface technique with FFTs, the discretisation is not matching at  $\Gamma$  and a saddle-point system is attained. The additional discretisation error introduced at  $\Gamma$  is acceptable for the models considered here.

### 6.4 Non-propagated harmonic components

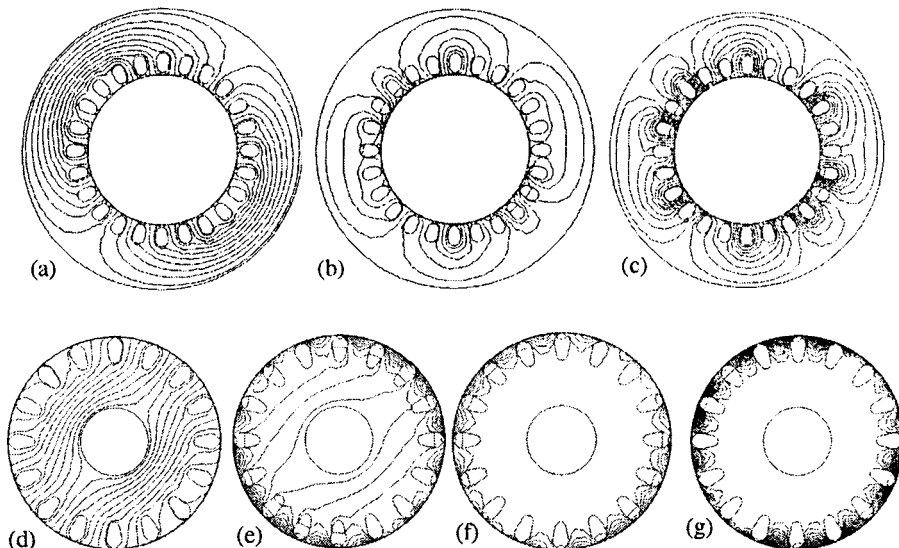
A wave component at pulsation  $\omega_p$  and pole-pair number  $\lambda_k$  induced by the stator in the air gap, corresponds to a wave at pulsation  $\omega_q = \omega_p - \lambda_k \omega_m$  and pole-pair number  $\lambda_k$  observed by the rotor. A non-propagated harmonic components arises when either the component at pulsation  $\omega_p$  is not considered at the stator or the component at pulsation  $\omega_q$  is not considered at the rotor. The question arises which boundary conditions are inherently applied for these components in the air gap. Here, an important difference between the sliding-surface and the moving-band techniques is observed. In case of the moving-band approach, a wave component which is considered at the stator but not at the rotor vanishes at the boundary between the rotor and the moving band. Similarly, a component introduced by the rotor vanishes at the boundary between the stator and the moving band. Hence, non-propagated components experience homogeneous Dirichlet conditions at one of the boundaries of the moving band. As a consequence, the moving-band technique as presented here is flux-conservative in the air gap. In case of the sliding-surface technique presented, a stator harmonic component which is not propagated to the rotor does not vanish at the stator side of  $\Gamma$ . The non-propagated components experience a homogeneous Neumann constraint at the stator and rotor sides of  $\Gamma$ . This results in a discontinuous magnetic flux at  $\Gamma$ , even if an exact integration as in equation (10) is applied. The application of

Matrix	Order	Table I. Asymptotic order of the computational complexity of the individual system matrix components
$\mathbf{K}_{st}, \mathbf{K}_{rt}$	$n_{hm}n_{fe}$	
$\mathbf{K}_{mb}$	$n_{hm}n_{fe}$	
$\mathbf{B}_{st}, \mathbf{B}_{rt}$	$n_{hm}n_{fe}$	
$\mathbf{B}_{st}(FFT), \mathbf{B}_{rt}(FFT)$	$n_{hm}\sqrt{n_{fe}} \log \sqrt{n_{fe}}$	

homogeneous Dirichlet constraints to non-propagated flux components requires the addition of additional constraints of the form  $\mathbf{S}_{st}\mathbf{F}\mathbf{u}_{st} = 0$  and  $\mathbf{S}_{rt}\mathbf{F}\mathbf{u}_{rt} = 0$  where  $\mathbf{S}_{st}$  selects all components with wave numbers  $(\omega_p, \lambda_k)$  for which the corresponding slip pulsations  $\omega_q = \omega_p - \lambda_k\omega_m$  are not considered at  $\Omega_{rt}$  and  $\mathbf{S}_{rt}$  selects all components with wave numbers  $(\omega_q, \lambda_l)$  for which the corresponding excitation pulsations  $\omega_p = \omega_q + \lambda_l\omega_m$  are not considered at  $\Omega_{st}$ .

**7. Capacitor motor example**

Both techniques are compared for a capacitor motor induction machine. The motor has a nominal power of 0.75 kW, a nominal speed of 2,760 rpm, a voltage of 230 V, a nominal current of 5.2 A and a  $\cos \phi$  of 0.96. The main winding of the motor is connected directly to a single-phase alternating current supply whereas the auxiliary winding is connected through a capacitor of 19.7  $\mu\text{F}$ . The stator has 24 slots whereas the rotor has 16 slots. Here, as an example, the no-load behaviour of the capacitor motor is simulated. The power supply is assumed to be a perfect sine at 50 Hz. Because of ferromagnetic saturation, additional harmonic components are introduced at the stator of which only the 150 and 250 Hz are considered in the frequency-domain approach. The air-gap field of a single-phase motor is elliptical. Hence, at no-load, there is besides the 0 Hz component, rotating synchronously to the forward rotating air-gap field, a significant component at 100 Hz introduced by the backward rotating air-gap field. Substantial components at 750 and 850 Hz are detected due to the slotting of the stator and rotor. The magnetic flux distributions for the different time-harmonic components are shown in Figure 2. The spectrum of the current through the main winding indicates that the slot harmonics at 750 and 850 Hz are substantially more important than the harmonics introduced by saturation (Figure 3). A transient simulation of the start-up of the capacitor motor shows that a large number of periods have to be stepped through before reaching a steady state, which is not necessary when using a multi-harmonic

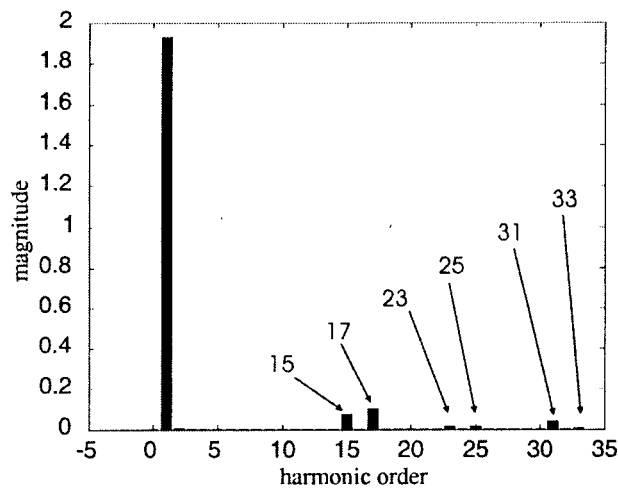


**Figure 2.** Magnetic flux plot in the stator at: (a) 50 Hz, (b) 750 Hz, and (c) 850 Hz; magnetic flux plot in the rotor at: (d) 0 Hz, (e) 100 Hz, (f) 800 Hz, and (g) 900 Hz

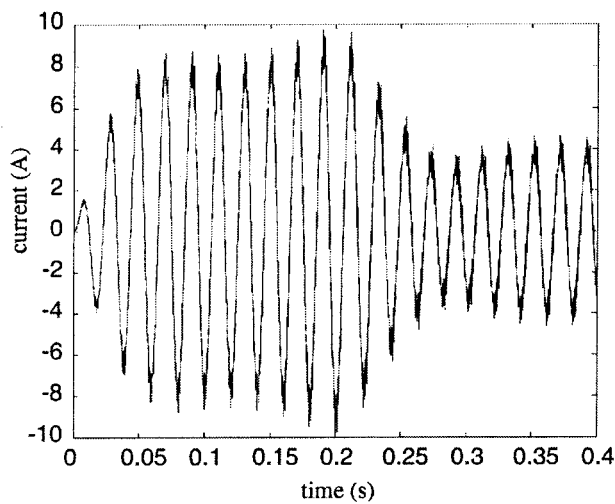
approach as is proposed in this paper. For the capacitor motor model with 24832 FE nodes, the multi-harmonic simulation takes 16 min whereas the transient simulation requires 5 h (Figure 4).

**8. Conclusions**

Multi-harmonic FE machine models require the solution of large systems of equations, but may be advantageous over transient schemes which need to step through a start-up process before reaching a steady state.



**Figure 3.**  
Spectrum of the current through the main stator winding at no-load



**Figure 4.**  
Current through the main stator winding at start-up



**References**

- Davat, B., Ren, Z. and Lajoie-Mazenc, M. (1985), "The movement in field modeling", *IEEE Trans. Magn.*, Vol. 21 No. 6, pp. 2296-8.
- De Gersem, H. and Hameyer, K. (2002), "Air-gap flux splitting for the time-harmonic finite-element simulation of single-phase induction machines", *IEEE Trans. Magn.*, Vol. 38 No. 2, pp. 1221-4.
- De Gersem, H. and Weiland, T. (2004), "Harmonic weighting functions at the sliding interface of a finite element machine model incorporating angular displacement", *IEEE Trans. Magn.*, Vol. 40 No. 2, pp. 545-8.
- De Gersem, H., Vandewalle, S., Clemens, M. and Weiland, T. (2003), "Interface preconditioners for non-trivial interface conditions in air gaps of rotating electrical machines", in Herrera, I., Keyes, D., Widlund, O. and Yates, R. (Eds), *Proceedings of the Fourteenth International Conference on Domain Decomposition Methods, Cocoyoc, Mexico*, Domain Decomposition Methods in Science and Engineering, National Autonomous University of Mexico (UNAM), Mexico City, pp. 381-8.
- Demenko, A. (1996), "Movement simulation in finite element analysis of electric machine dynamics", *IEEE Trans. Magn.*, Vol. 32 No. 3, pp. 1553-6.
- Gyselinck, J., Dular, P., Geuzaine, C. and Legros, W. (2002), "Harmonic-balance finite-element modeling of electromagnetic devices: a novel approach", *IEEE Trans. Magn.*, Vol. 38 No. 2, pp. 521-4.
- Gyselinck, J., Vandeveld, L., Dular, P. and Geuzaine, C. (2003), "A general method for the frequency domain FE modeling of rotating electromagnetic devices", *IEEE Trans. Magn.*, Vol. 39 No. 3, pp. 1147-50.
- Perrin-Bit, R. and Coulomb, J. (1995), "A three-dimensional finite element mesh connection for problems involving movement", *IEEE Trans. Magn.*, Vol. 31 No. 3.
- Rodger, D., Lai, H. and Leonard, P. (1990), "Coupled elements for problems involving movement", *IEEE Trans. Magn.*, Vol. 26 No. 2, pp. 548-50.
- Vandeveld, L., Gyselinck, J. and Melkebeek, J. (1994), "Steady-state finite element analysis in the frequency domain of inverter-fed squirrel cage induction motors", *Proc. SPEEDAM*, Taormina, Italy, pp. 29-34.
- Vinsard, G. and Laporte, B. (1994), "A new formulation for induction machine computation", *IEEE Trans. Magn.*, Vol. 30 No. 5, pp. 3693-6.
- Yamada, S., Bessho, K. and Lu, J. (1989), "Harmonic balance finite element method applied to nonlinear AC magnetic analysis", *IEEE Trans. Magn.*, Vol. 25 No. 4, pp. 2971-3.